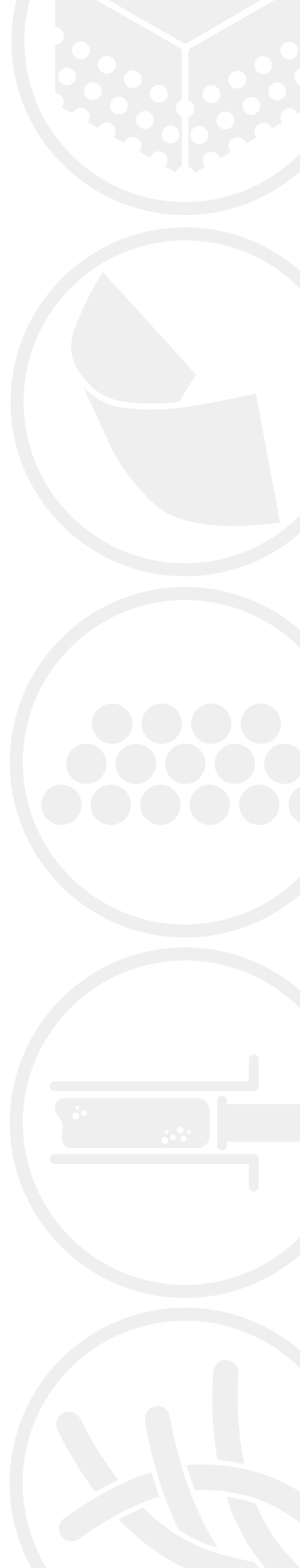


# BIOLOGICS PORTFOLIO



# Trusted Experts in Regenerative Biologics

Maxxeus Dental biologics have been available since 1990 and provide safe and high quality options for the best clinical outcome. With decades of expertise in providing biologics to the dental market, we understand the needs of the implanting clinician. Because we focus exclusively on biologics, Maxxeus Dental can provide our customers and their patients the best regenerative biologics options available.

We provide a large portfolio of allograft tissue that has been developed specifically to meet our customer's needs. With a robust Process, Engineering and Development program, Maxxeus Dental uses science and innovation to develop the newest technologies. Our portfolio continues to expand as innovative technologies develop and techniques evolve.



Community Tissue Services' commitment to our donors, their families and tissue recipients, combined with innovative technology, safety and trusted leadership, has allowed us to be the allograft provider of choice for over 30 years.



## ALLOGRAFT STERILITY

Community Tissue Services has validated a  $10^{-6}$  Sterility Assurance Level (SAL) for musculoskeletal grafts in their final packaging following ISO 11137 Method 2B. A  $10^{-6}$  SAL means the probability of a graft being non-sterile is 1 in 1,000,000.

Community Tissue Services chose Method 2B and employed a two-media approach for conducting sterility testing because it represents a conservative methodology, well suited for the variations of bioburden inherent in human tissue.

## TESTING

Prior to clearance for processing, donor medical records, including the donor's medical and social history, physical assessment and autopsy results (if performed), as well as all other recovery documentation are reviewed by Community Tissue Services' Medical Directors.

All Community Tissue Services donors are tested for transmissible diseases using FDA-licensed donor screening test kits.

Additionally, each individually recovered tissue undergoes pre-processing microbiological cultures to ensure pathogenic organisms are not introduced to the processing environment.

## PROCESSING

All musculoskeletal tissue grafts recovered by our tissue centers and recovery partners across the United States are processed at The Center for Tissue, Innovation and Research in Kettering, Ohio. Our industry leading facility features 14 ISO Class 5 certified clean rooms. All of our donors are processed in our clean rooms in an aseptic environment, one at a time. All Maxxeus Dental Allografts go through a patented bioburden reduction process and are terminally irradiated for a Sterility Assurance Level of  $10^{-6}$ .

## LICENSES & ACCREDITATION

Community Tissue Services is registered with the Food and Drug Administration (FDA), accredited by the American Association of Tissue Banks (AATB) and maintains all applicable state licenses. The Center for Tissue, Innovation and Research is ISO 13485 certified. For access to all of our licenses and certificates, please visit our website at [www.communitytissue.org/licenses](http://www.communitytissue.org/licenses).

# About Our Donors

In 2019, Community Tissue Services recovered tissue from more than 6,600 donors and returned over 750,000 allografts to communities around the world.

Community Tissue Services' donors are mothers and fathers, brothers and sisters, grandparents, aunts and uncles, cousins, friends, neighbors and coworkers. They are everyone and they live in cities across the United States. Tissue donors are selfless and give their final life gift – a gift that gives someone else a life-saving or life-enhancing transplant. Community Tissue Services admires, respects and is truly grateful for all tissue donors and their families.

All grafts recovered by our tissue centers and partner Organ Procurement Organizations (OPOs) across the United States are processed at Community Tissue Services' Center for Tissue, Innovation and Research. All of Community Tissue Services' valued OPO partners are trained and audited by Community Tissue Services to ensure recovery operations are compliant with all applicable regulations.

- All partners performing recoveries for Community Tissue Services are registered with the FDA as an HCT/P establishment
- All donors are recovered using aseptic technique in an environment that meets or exceeds the standards set by the FDA, AATB and Community Tissue Services' Standard Operating Procedures
- All allograft donors are recovered within the United States

As an added measure of safety, and to reduce the risk of transmission of Creutzfeldt-Jakob disease (CJD), Community Tissue Services does not recover tissue from the spinal column or Dura, as these areas have a higher potential for carrying the prion associated with CJD transmission.

# Allograft BONE PARTICULATES

Maxxeus Dental leads the dental industry offering the widest variety of bone type and particulate ranges to suit any clinician's preference. Bone particulates are processed using a patented bioburden reduction process, then freeze-dried and irradiated in final packaging to ensure a  $10^{-6}$  Sterility Assurance Level. Maxxeus Dental allografts come in a variety of volumes to give the clinician complete control over the quantity used in every procedure.



## Cortical Min./Demin. Blend

Cortical Mineralized/Demineralized Blend is a premium graft offering which combines approximately 70% mineralized cortical bone with 30% demineralized cortical bone in an optimal mixture for rapid bone regeneration.

## Corticocancellous Mineralized

Corticocancellous combines mineralized dense cortical bone and porous cancellous bone in one graft.

## Cancellous Mineralized

Cancellous bone, also known as spongy or trabecular bone, is porous bone that allows for increased blood flow around a graft site.

## Cortical Mineralized

Cortical bone is dense compact bone that will maintain space in a graft site. Slower resorption time than cancellous bone means this graft is good for maintaining space.

## Cortical Demineralized

Removing the majority of the mineral content of the bone, primarily calcium, exposes biologically active bone morphogenetic proteins that promotes an osteoinductive reaction at the graft site.

Product	Particulate Size	0.25cc	0.5cc	1.0cc	2.0cc
Cortical Mineralized/ Demineralized Blend	0.25-1.00mm	-	DM005	DM010	DM020
Corticocancellous Mineralized	0.25-0.50mm	DQ025	DQ005	DQ010	DQ020
	0.25-1.00mm	DH025	DH005	DH010	DH020
	0.5-1.0mm	DZ025	DZ005	DZ010	DZ020
Cancellous Mineralized	0.25-0.50mm	DR025	DR005	DR010	DR020
	0.25-1.00mm	DK025	DK005	DK010	DK020
	0.5-1.0mm	DA025	DA005	DA010	DA020
	1.0-2.0mm	-	DL005	DL010	DL020
Cortical Mineralized	0.125-0.850mm	DN025	DN005	DN010	DN020
	0.25-0.50mm	DG025	DG005	DG010	DG020
	0.25-1.00mm	DB025	DB005	DB010	DB020
	0.5-1.0mm	DE025	DE005	DE010	DE020
	1.0-2.0mm	-	DX005	DX010	DX020
Cortical Demineralized	0.125-0.850mm	DD025	DD005	DD010	DD020
	0.25-0.50mm	DC025	DC005	DC010	DC020
	0.5-1.0mm	DY025	DY005	DY010	DY020

Shelf Life: 5 years



**NEW!**

## Allograft AlloBind Particulates

Introducing AlloBind particulates, an innovative new grafting material from Maxxeus Dental, the Trusted Experts in Regenerative Biologics.

AlloBind particulates are a novel bone grafting substitute that offers the convenience of particulates with the ease of a putty. AlloBind particulates are packaged as a freeze-dried powder that, once rehydrated, handles like a world class putty. Unlike a putty, AlloBind gives the clinician the flexibility to obtain the desired graft fluidity.

- Comprised of 100% allograft tissue
- No synthetic or animal derived fillers or carriers
- Each lot verified for osteoinductivity



### Reconstitution

AlloBind particulates should be gradually injected with sterile saline to reconstitute the graft until the desired handling characteristics are achieved.

### Hydration Level

Maxxeus Dental recommends a diluent volume of saline for each dry volume for reconstitution of the graft. Clinicians may customize the graft fluidity by choosing the volume of hydration solution to combine with AlloBind particulates dependent on the desired fluidity.

Reconstituted Volume	0.25cc	0.5cc	1.0cc	2.0cc
Dry Volume	0.35cc	0.75cc	1.5cc	3.1cc
AlloBind	AB025	AB005	AB010	AB020

Shelf Life: 1 year

## Allograft DBM PUTTY

Maxxeus DBM Putty contains a variety of biologically active bone morphogenetic proteins (BMPs), which are among the osteoinductive components of bone. More than 20 BMPs have so far been identified in human allograft bone tissue. A validated in vitro osteoinductive assay using ELISA BMP 2 concentration measurement method is used to verify BMP is present in our final DBM product.



	0.5cc	1.0cc	2.5cc
DBM Putty	3060-40	3061-40	3062-40

Shelf Life: 2 years

## Allograft DBM FIBERS

With Maxxeus DBM Cortical Fibers, clinicians can tailor a grafting solution to achieve the desired handling characteristics, regardless of what is added to the graft.

Maxxeus DBM Cortical Fibers provides a graft mixture of both demineralized cortical bone fibers and demineralized bone powder with a ratio of fibers to bone to provide an optimum graft mixture that can be added to a wide array of graft types. Comprised of 100% allograft bone, there are no synthetic carriers or fillers. Maxxeus DBM Fibers are a great addition to allografts or autografts, providing osteoinductive and osteoconductive properties as a bone void filler.

- 100% human demineralized cortical bone fibers and powder
- Osteoconductive and osteoinductive
- Rehydrates quickly
- Allows clinician to tailor handling characteristics
- Sterility Assurance Level (SAL) of  $10^{-6}$



	1.0cc	2.5cc	5.0cc
DBM Fibers	3612-12	3613-12	3614-12

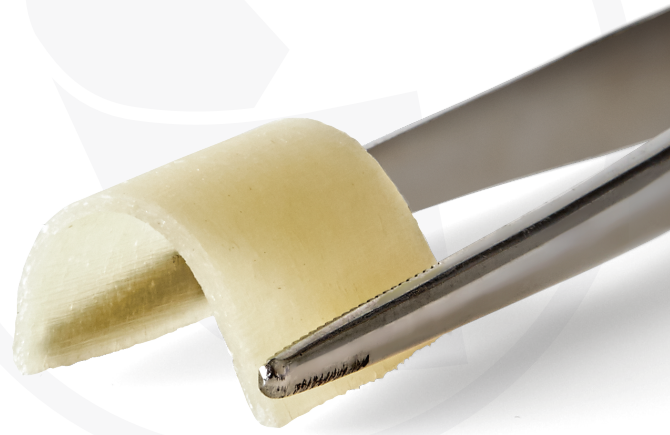
Shelf Life: 5 years

## Allograft

# LAMINAR BONE

Maxxeus Dental Laminar Bone may be used to replace a buccal wall in an augmentation procedure, as well as any craniomaxillofacial procedures, where a flexible, yet mechanically strong membrane is desired.

Laminar Bone Membranes (LBMs) are made from thin sheets of cortical bone, which have been processed to be flexible without breaking. These rigid membranes are well suitable for procedures where space maintenance/creation is required. The grafts are packaged in saline and do not require reconstitution before use. LBMs are osteoinductive and have no need to use fixation screws or tacks. Because of these advantages, LBMs are indicated for socket augmentation in cases of compromised facial bone.

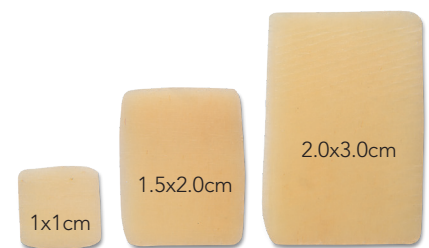


	1.0x1.0cm	1.5x2.0cm	2.0x3.0cm
Laminar Bone	DO101	DO152	DO203

Shelf Life: 4 years

# BARRIER MEMBRANES

Maxxeus Dental Allograft Barrier Membranes inhibit epithelial down growth and infiltration of connective tissue fibroblasts. Barrier Membranes conform to the graft site without memory, offering easy coverage for guided bone regeneration and guided tissue regeneration procedures. Primary closure is required. The membranes are resorbable with no need for retrieval.



Actual Size



## Pericardium

Thin and flexible, yet strong enough to suture or tack with minimal memory. Pericardium will contour to the ridge or grafting site.

	1.0x1.0cm	1.5x2.0cm	2.0x3.0cm
Pericardium	DP101	DP152	DP203

Shelf Life: 5 years



## Fascia

Thicker than Pericardium while maintaining more flexibility. Fascia is a strong collagen that will hold a suture or tack if desired.

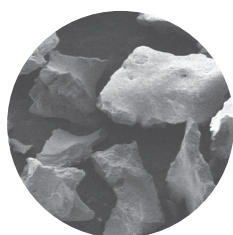
	1.0x1.0cm	1.5x2.0cm	2.0x3.0cm
Fascia	DF101	DF152	DF203

Shelf Life: 5 years

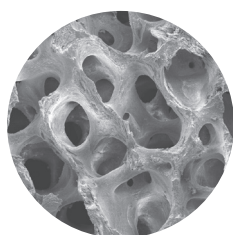
# Xenograft BONE PARTICULATES

Maxxeus Dental Xenograft Particulates are a natural hydroxyapatite bone grafting material. The highly purified osteoconductive material is produced from natural bone through a multi-step purification process. Due to its natural origin, it is chemically, as well as structurally, comparable to mineralized human bone (nanocrystalline natural apatite).

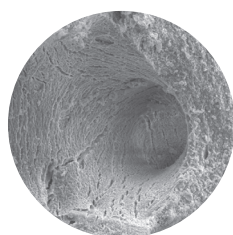
The presence of a macroporous structure favors cell ingrowth while the micropores allow the penetration of patient cells into the implant. The pore structure and interconnected pore system allow the grafting material to act as a guide for growth factors, blood vessels, bone marrow and bone cells.



Irregular porous shape promotes angiogenesis



Well defined pore structure



40-60µm micropores

- Anorganic Cancellous Particulates derived from Australian bovine bone and manufactured in the United States
- Similar pore structure to that of human bone
- Large number of well shaped micropores
- Higher porosity and surface area compared to competitors xenograft particulates

Small Particulates (0.25mm-1.00mm)		
Jar	0.54cc (0.25g)	XK005
	1.08cc (0.50g)	XK010
	2.16cc (1.00g)	XK020
	4.32cc (2.00g)	XK040
Syringe	0.25cc	OK025
	0.50cc	OK005

Large Particulates (1.00mm-2.00mm)		
Jar	2.00cc (0.50g)	XL020
	4.00cc (1.00g)	XL040
	8.00cc (2.00g)	XL080
Syringe	0.50cc	OL005

Shelf Life: 3 years



**NEW!**

## Xenograft BARRIER MEMBRANES

Maxxeus Dental Xenograft Barrier Membranes act as a barrier to prevent soft tissue ingrowth in a bone defect and aid in soft tissue healing. These collagen membranes provide excellent protection for guided bone regeneration and guided tissue regeneration procedures. Primary closure is required. The membranes are resorbable with no need for retrieval.



### MaxxMem+

Highly purified intact collagen membrane made of porcine peritoneum. Thin and flexible, yet strong enough to suture.

	1.5x2.0cm	2.0x3.0cm	3.0x4.0cm
MaxxMem+	XP152	XP203	XP304

Shelf Life: 3 years



### MaxxMem

Highly purified type I collagen derived from porcine tendon. Moderate mechanical strength and structural integrity.

	1.5x2.0cm	2.0x3.0cm	3.0x4.0cm
MaxxMem	XC152	XC203	XC304

Shelf Life: 3 years

## WOUND DRESSINGS

Maxxeus Dental Wound Dressings are absorbent, porous collagen matrices derived from bovine dermis tissue. Wound dressings are applied directly to the wound site and used to protect the wound and delicate new tissue.

Indicated for the management of denture sores, oral ulcers (non-infected or viral), periodontal surgical wounds, suture sites, burns, extraction sites, and traumatic wounds.

MaxxCote, MaxxPlug and MaxxTape contain ten individually packaged dressings per box and reabsorb within 30 days of placement. Primary closure is required.



Wound Dressing		
MaxxCote	2.0 x 4.0 x 3.0cm	XCOTE
MaxxPlug	1.0 x 2.0cm	XPLUG
MaxxTape	2.5 x 7.5 x 0.1cm	XTAPE

Shelf Life: 3 years

# Allograft STRUCTURAL GRAFTS

Platform grafts are instrumental in bone volume regeneration for severe bone atrophy cases that require an increase in initial stability for an implant site.

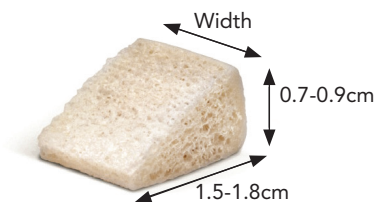


## Cortical Pins

Cortical Pins are made from solid cortical bone and are versatile enough to be used in a wide range of clinical applications. They are most commonly used in tenting procedures in conjunction with particulate or putty to support a membrane. Grafts are packaged two per pack in saline and do not require reconstitution before use.

	2mm	2.8mm
Cortical Pins	DT220	DT228

Shelf Life: 4 years

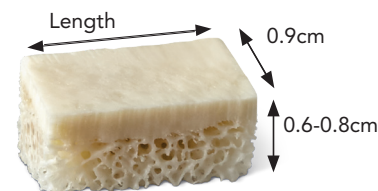


## J-Platform

J-Platforms are corticocancellous blocks made from the iliac crest. They are designed to aid in the restoration of severely resorbed ridges without the need for an autogenous block graft from the patient.

	1.0cm	1.5cm
J-Block	DJ010	DJ015

Shelf Life: 5 years



## Unicortical Platform

Unicortical Platforms are corticocancellous blocks made from the iliac crest. They are designed to aid in the restoration of severely resorbed ridges without the need for an autogenous block graft from the patient.

	1.2cm	1.5cm
Unicortical Platform	DU912	DU915

Shelf Life: 5 years

**NEW!**

## GRAFT MIXING BOWL









































Maxxeus Dental offers a dual sided stainless steel graft mixing bowl to allow clinicians to mix their grafting material and rehydrate membranes with ease.



Instruments	
Graft Mixing Bowl	IGMBO

# Common Procedures Guide

Common procedures for each graft are listed below. These recommendations are based off of Maxxeus Dental customers' tissue usage reporting and are not inclusive of all procedures and graft usages. Final graft usage is at the clinician's sole discretion.

GRAFT TYPE		Socket Preservation	Immediate Implant Placement	Periodontal Defect	Sinus Augmentation	Ridge Augmentation
Allograft Bone Particulates						
Xenograft Particulates						
DBM Putty						
DBM Fibers						
Barrier Membrane						
Laminar Bone						
Cortical Pins						
Block Graft						
Wound Dressing		Denture Sores, Oral Ulcers (Non-Infected or Viral), Periodontal Surgical Wounds, Suture Sites, Burns, Extraction Sites, Traumatic Wounds				

GRAFT VOLUME		Socket Preservation	Immediate Implant Placement	Periodontal Defect	Sinus Augmentation	Ridge Augmentation
	0.25cc	●	●	●		
	0.5cc	●	●	●		
	1.0cc	●	●	●		●
	2.0cc	●			●	●

# Ordering Information

With a dedicated customer service team and sales representatives around the globe, we provide premier service to all our customers no matter the size of your practice.

- All grafts will be delivered FedEx Ground unless requested otherwise at the time of ordering.
- Orders shipping via air will ship same day if order is received before 6pm EST, Monday through Friday.
- All other orders ship next business day, excluding holidays.
- Place orders via telephone at 1-800-684-7783 Monday thru Friday 8am-7pm EST.
- Place orders online 24/7 at [www.maxxeusdental.com](http://www.maxxeusdental.com).
- All orders require a major credit card to ensure processing and shipment. We accept Visa, Mastercard and American Express.



Computer/Tablet/Mobile  
[www.maxxeusdental.com](http://www.maxxeusdental.com)



Toll-Free Phone  
1-800-684-7783

Reserve your grafts today and  
receive free FedEx Ground Shipping  
on orders over \$600.



The Center for Tissue, Innovation and Research is one of the most advanced facilities in the world devoted exclusively to the research, production and distribution of allografts. Designed and built from the ground up with quality and safety in mind, the building houses 14 ISO Class 5 certified rooms and over 5,000 square feet of Process, Engineering and Development space.



Maxxeus Dental is a brand of Community Tissue Services  
Copyright © 2020 Community Tissue Services